

# DOKTOR DOOM

## Fully Programmable LCD AEROSOL CSA DISPENSER

### FOR USE IN:

- Offices
- Restaurants
- Homes / Cottages
- Farms
- Hotels / Motels
- RVs and Boats
- Food Plants
- Hospitals
- Food Service Establishments
- Restrooms
- Resorts
- Dairies
- Horse Stables
- Poultry Houses
- Hog Pens
- Veterinaries
- Kennels
- Schools
- Fitness Clubs
- Industrial Plants

or wherever unwanted odours or insects are a problem.



**AUTOMATIC METERED TIME-RELEASE SPRAY FOR CONTROL OF ODOURS OR FLYING INSECTS**

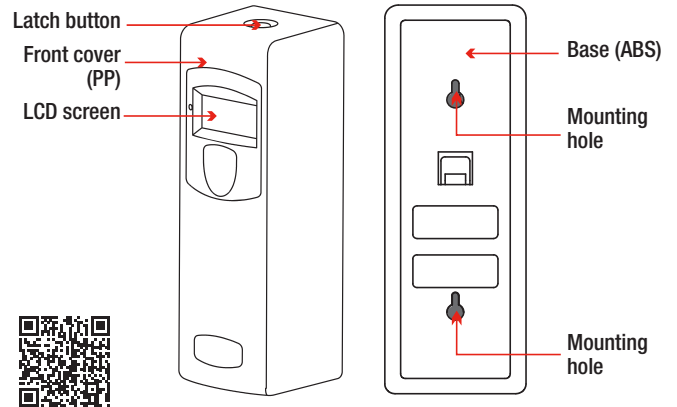
### SPECIFICATIONS

NAME	Auto Insecticide & Fragrance Dispenser
OUTER DIMENSIONS	L 86 × W 83 × H 238 mm
WEIGHT	400 g
MATERIAL	PP, ABS
POWER SUPPLY	2 pcs. "D" size alkaline battery

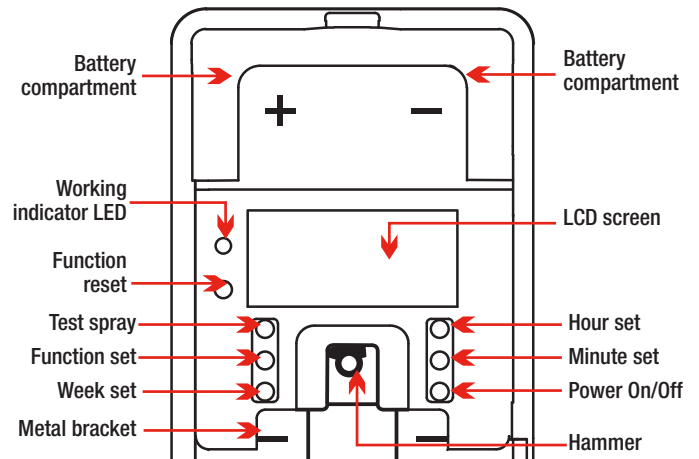
ELECTRICAL SOURCE VOLTAGE	DC 3 V
STATIC CURRENT	10 μA
WORKING CURRENT	500 mA
POWER	1.5 W

## USER MANUAL

### OVERVIEW



### CONTROLS



### FUNCTIONS

- This device can be set to work on any of three weekly cycles:
  - Monday through Friday,
  - Monday through Saturday, or
  - all week.
- The device operates for a specified period in each 24-hour day, for example starting at 8:00 (8 a.m.) and stopping at 18:00 (6 p.m.)
- The spray interval time while operating can be from 1 to 60 minutes, for example spraying every 15 min.
- The device has a counter that records how many times it has sprayed.
- The device has a clock function.

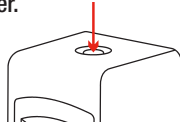
*Continued next page*

**SKU# 55109**

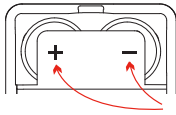


## HOW TO USE

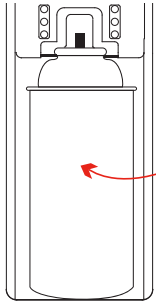
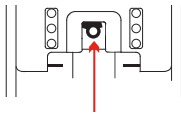
1. Press down the latch button to open the front cover.



2. Insert two "D" size batteries.



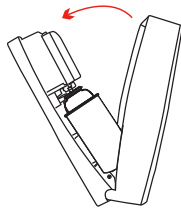
3. Push the hammer to the raised position.



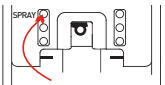
4. Place aerosol onto the metal bracket.

5. Set functions as desired (see **SETTINGS**).

6. Close the front cover.



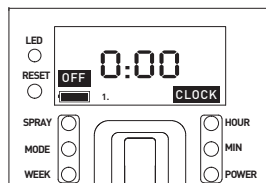
7. Test by pressing the test spray button.



8. Mount the device (see **INSTALLATION**).

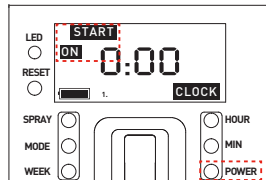
## SETTINGS

When the battery is installed, the LCD screen is as shown.



### Power On

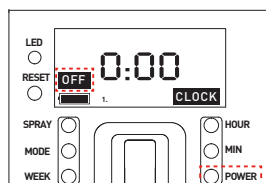
Press the **POWER** button: the screen displays **START**.



### Power Off

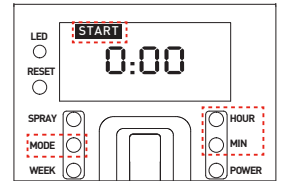
Press the **POWER** button again: the screen displays **OFF**.

❖ The clock is still displayed when the power is off.



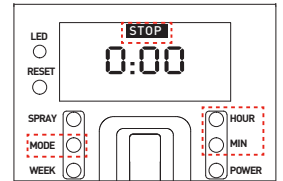
### Enter function setting mode

With the power on, press and hold the **MODE** button: the **START** display flashes.



### Set the daily starting time

With the **START** display flashing, use the **HOUR** and **MIN** buttons to set the hour and minutes respectively. Each press of the **HOUR** or **MIN** button advances one unit; press and hold the button to speed up.



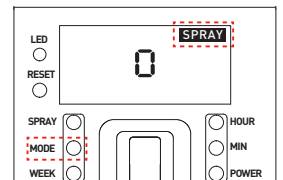
### Set the daily stopping time

Press the **MODE** button to jump from the previous setting: the **STOP** display flashes. Use the **HOUR** and **MIN** buttons as above to set the stopping time.

❖ The factory-default setting is to operate 24 hours a day.

### Check the spray counter

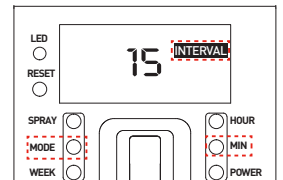
Press the **MODE** button again: the **SPRAY** display flashes. The number shown is the recorded count of sprays.



### Set the spray interval

Press the **MODE** button again: the **INTERVAL** display flashes. Use the **MIN** button as above to set the time in minutes between sprays.

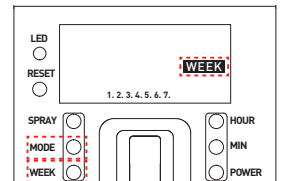
❖ The factory-default setting is to spray every 15 minutes.



### Set the weekly working period

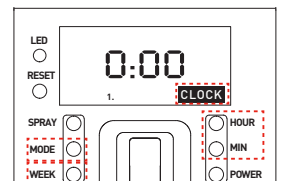
Press the **MODE** button again: the **WEEK** display flashes. Press the **WEEK** button to choose from the three provided cycles: Monday to Friday, Monday to Saturday, or Monday to Sunday.

❖ The factory-default setting is to work all week.



### Set the clock and day of the week

Press the **MODE** button again: the **CLOCK** display flashes. Use the **HOUR** and **MIN** buttons as above to set the current time, and the **WEEK** button to select the day of the week.



### Exit settings

Press the **MODE** button again to return to the main screen. The device will also return to the main screen automatically from setting mode if there has been no action for 18 seconds.

### Other settings

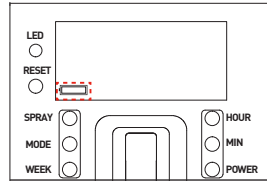
Press the SPRAY button to test the spray.

❖ **WARNING: Keep your face away from the device when testing the spray.**

Press the RESET button to restore all the factory-default settings, which are to spray every 15 minutes, 24 hours a day, 7 days a week.

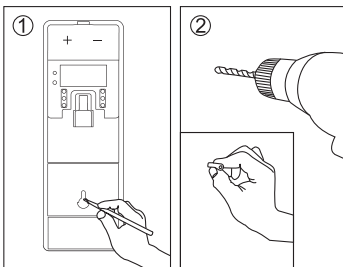
### Change-batteries reminder

When the batteries are low, the LCD screen shows only a battery icon, and the device stops working.

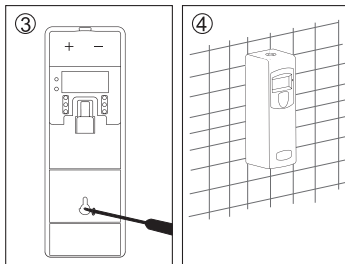


## INSTALLATION

For best results, mount the dispenser 2.1 – 2.7 m (7–9 feet) above the floor.



1. Open the front cover, position the unit as desired, and make drilling marks on the wall through the two mounting holes.
2. Drill holes at the marks and insert the plastic plugs.



3. Fix the dispenser to the wall with the two screws; leave 3 mm (1/8 inch) of space between the screw heads and the wall surface so the device can easily be taken down.
4. Ensure the dispenser is seated securely on the wall.

## ATTENTION

- Keep this device away from children.
- Install the device in a dry location.
- Clean the device only by wiping with a dry towel.
- During long periods of disuse, please remove the batteries and aerosol.
- Keep your face away from the device when it is operating.
- The aerosol and batteries must be purchased separately.